

EBERLE AND HERITAGE PARK RESERVATIONS

Pay in full at time of reservation. For reservations, contact the JBSA-Randolph Outdoor Recreation at (210) 652-3702/5640.

Name	Capacity	Price
Eberle Park	500	\$50
Pavilion A	250	\$35
Pavilion B	250	\$35
Grill House	-	\$20
Serving House	-	\$20
Heritage Park Pavilion	-	\$35

ARCHERY RANGE

Daily Pass \$5 Annual Pass \$40 Family Pass \$65 (\$5 per additional family member)



OUTDOOR ADVENTURE OPPORTUNITIES ACROSS JBSA

LACKLAND PAINTBALL

Phone: (210) 925-5532/5533
Private reservations available Monday through Friday.

LACKLAND FAMCAMP

Phone: (210) 671-5179
Monday - Thursday: 9 a.m. to 4 p.m.
Sunday: 10 a.m. to 3 p.m.

LACKLAND SADDLE CLUB

Phone: (210) 925-5532/5533
Privately owned horses ONLY!

CAMP BULLIS RECREATION CENTER

Phone: (210) 295-7577/7529
Gun Range
Archery Range
3D Competition

FSH FAMCAMP

Phone: (210) 221-5502
Monday - Friday: 9 a.m. to 4 p.m.
Saturday & Sunday: 10 a.m. to 3 p.m.

FSH EQUESTRIAN CENTER

Phone: (210) 563-2526
Call for more information about riding lessons, trail rides and full boarding for privately owned horses.

CANYON LAKE

Lodging reservation/Park information
(830) 964-3576 (800) 280-3466
jbsalodgingres@gmail.com

Boat rental reservations/information

(210) 601-7768
jbsamarinasuper@gmail.com

DID YOU KNOW?

The Outdoor Recreation sells Texas state hunting and fishing licenses.

RESERVATION FEE

Full rental fee is due at time of reservation.

TOWABLES

Proof of vehicle insurance is required for rental of any towable equipment.

RENTAL NOTES

All wheeled items must be picked up by 3 p.m. Allow one hour for check-out and check-in of items. Lost or damaged non-mechanical items will be assessed a replacement fee. It is the customer's responsibility to load and unload all rental equipment.

CANCELLATIONS or CHANGES

There will be a \$10 administrative fee for cancellations or changes. Cancellations/changes must be made seven business days prior to checkout. Rain checks will be given for cancellations/changes made within seven business days of pickup.

DAMAGED & CLEANING FEES

All equipment returned dirty and/or wet will be assessed a cleaning fee of up to \$100.

Missing or damaged parts will be assessed full replacement cost. Damage to equipment will be assessed actual repair cost.

Canoes/Kayaks must be returned clean. If they are returned dirty a cleaning fee of up to \$100 will be assessed.

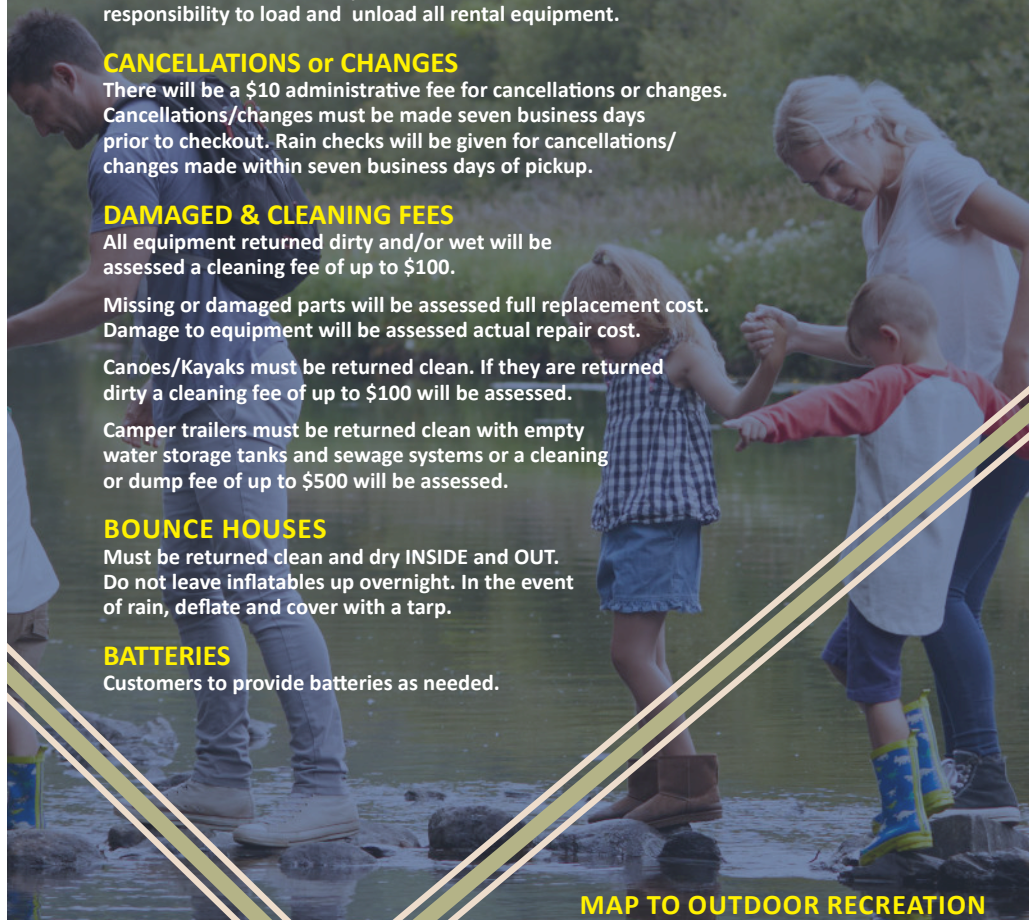
Camper trailers must be returned clean with empty water storage tanks and sewage systems or a cleaning or dump fee of up to \$500 will be assessed.

BOUNCE HOUSES

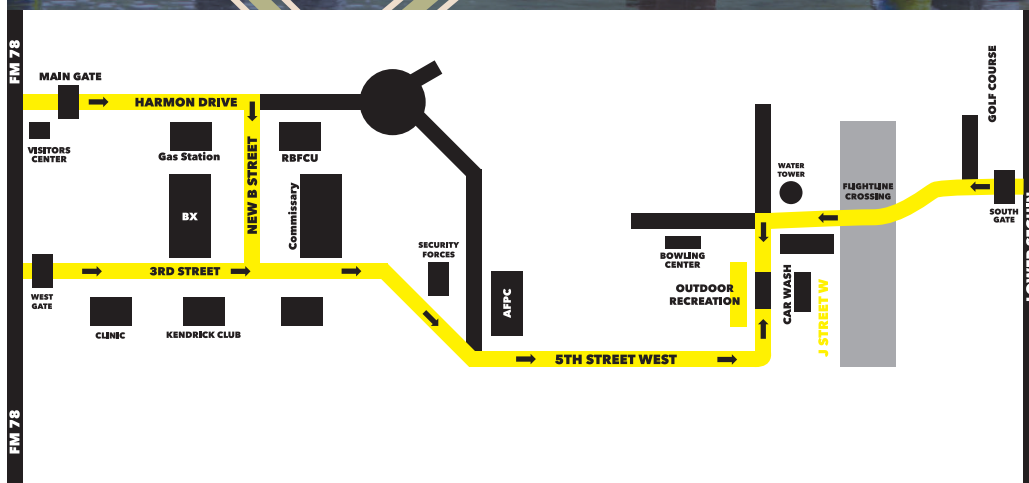
Must be returned clean and dry INSIDE and OUT. Do not leave inflatables up overnight. In the event of rain, deflate and cover with a tarp.

BATTERIES

Customers to provide batteries as needed.



MAP TO OUTDOOR RECREATION



525 J STREET WEST, BLDG. 895

JOINT BASE SAN ANTONIO - RANDOLPH

OUTDOOR RECREATION PRICE LIST



JBSATODAY.COM



PHONE LIST

Randolph 210-652-5640
Other Locations:
Lackland 210-925-5532/5533
Fort Sam Houston 210-221-5224/5225
Camp Bullis 210-295-7577/7529
JBSA Recreation Park.... 800-280-3466
at Canyon Lake 830-226-5357

HOURS OF OPERATION

Monday - Friday 9 a.m. to 4 p.m.
Saturday, Sunday & Holidays Closed

PICKUP/DROP OFF TIMES FOR ALL EQUIPMENT

Monday - Friday 9 a.m. to 3 p.m.
Saturday, Sunday & Holidays Closed

Hours of operation, prices and policies are subject to change without notice.



HOME AND GARDEN

Item	Daily	Weekend	Holiday	Weekly
Aerator w/Trailer (Gas)	\$55	\$110	\$165	\$220
Appliance Dolly	\$10	\$20	\$30	\$40
Extension Ladder, 13 feet	\$5	\$10	\$15	\$20
Fertilizer Spreader	\$4	\$8	\$12	\$16
Generator	\$55	\$110	\$165	\$220
Hand Shears (Trimming)	\$3	\$6	\$9	\$12
Hand Truck	\$4	\$8	\$12	\$16
Hedge Trimmer (Electric)	\$6	\$12	\$18	\$24
Lawn Mower (Push)	\$20	\$40	\$60	\$80
Leaf Blower (Electric)	\$4	\$8	\$12	\$16
Manual Tree Pruner	\$7	\$14	\$21	\$28
Metal Detector	\$6	\$9	\$15	\$18
Post Hole Digger	\$3	\$6	\$9	\$12
Pressure Washer	\$40	\$80	\$120	\$160
Rake	\$3	\$6	\$9	\$12
Telescoping Tree Pruner (Gas or Electric)	\$25	\$50	\$75	\$100
Tiller	\$50	\$100	\$150	\$200
Tree Pruner (Small)	\$3	\$6	\$9	\$12
Shovel	\$3	\$6	\$9	\$12
Weed-eater (Gas)	\$20	\$40	\$60	\$80
Wheel Barrow	\$7	\$14	\$21	\$28

SPORTS RECREATION

Item	Daily	Weekend	Holiday	Weekly
Badminton Set	\$6	\$12	\$18	\$24
Bases	\$3	\$6	\$9	\$12
Basketball	\$1	\$2	\$3	\$4
Bocce Ball Set	\$4	\$8	\$12	\$16
Bicycle (E-Bike)	\$20	\$40	\$50	\$70
Bicycle (Tri-Bike)	\$12	\$24	\$36	\$48
Bicycle Helmet	\$3	\$6	\$9	\$12
Bicycle w/Helmet	\$12	\$24	\$36	\$48
Bucket Ball	\$3	\$6	\$9	\$12
Corn Hole	\$6	\$12	\$18	\$24
Croquet Set	\$4	\$8	\$12	\$16
Disk Golf	\$20	\$40	\$60	\$80
Flag Football	\$5	\$10	\$15	\$20
Football	\$1	\$2	\$3	\$4
Frisbee	\$1	\$2	\$3	\$4
Giant Connect 4	\$6	\$12	\$18	\$24
Giant Horse Shoes	\$3	\$6	\$9	\$12
Giant Jenga	\$6	\$12	\$18	\$24
Horse Shoe Set	\$3	\$6	\$9	\$12
Kangaroo Sack	\$2	\$4	\$6	\$8
Kick and Score	\$30	\$45	\$60	\$90
Knocker Ball	\$40	\$60	\$80	\$100
Limbo	\$30	\$45	\$60	\$90
Ladder Ball	\$3	\$6	\$9	\$12
Pickle Ball	\$4	\$6	\$8	\$10
Ring the Rhino	\$30	\$45	\$60	\$90
Rod and Reel (Fresh)	\$4	\$8	\$12	\$16
Soccer Ball	\$1	\$2	\$3	\$4
Softball Set	\$12	\$24	\$36	\$48
Spike Ball	\$6	\$12	\$18	\$24
Sports Package (BB, FB, VB, SOC, HS, FRI)	\$10	\$20	\$30	\$40
Tackle Box	\$3	\$6	\$9	\$12
Tic Tac Toss	\$30	\$45	\$60	\$90
Tug-of-War Rope	\$7	\$13	\$19	\$25
Tug-of-War Four Way Rope	\$6	\$12	\$18	\$24
Volleyball	\$1	\$2	\$3	\$4
Volleyball Kit (Free Standing)	\$7	\$14	\$21	\$28
Washer Game	\$3	\$6	\$9	\$12

CAMPING EQUIPMENT

Item	Daily	Weekend	Holiday	Weekly
Air Mattress	\$12	\$18	\$36	\$48
Aluminum Cot	\$4	\$6	\$12	\$16
Backpack (Hiking)	\$4	\$6	\$12	\$16
Camping Stool	\$1	\$1.50	\$3	\$3
Cook Set	\$4	\$6	\$12	\$16
Ice Chest (16-Quart)	\$2	\$2.50	\$5	\$8
Ice Chest (34-68-Quart)	\$4	\$6	\$12	\$16
Ice Chest (72-128-Quart)	\$6	\$9	\$18	\$24
Ice Chest (150-Quart)	\$7	\$10.50	\$21	\$28
Lantern	\$4	\$6	\$12	\$16
Roll Foam Mat	\$3	\$4.50	\$9	\$12
Roll Away Bed	\$10	\$20	\$30	\$40
Sleeping Bag	\$4	\$6	\$12	\$16
Stove Double Burner	\$4	\$6	\$12	\$16
Table Top Grill	\$7	\$14	\$21	\$28
Tent 2-Person	\$12	\$18	\$36	\$48
Tent 3-4-Person	\$20	\$30	\$60	\$80
Tent 5/6-Person	\$20	\$30	\$60	\$80
Water Jug (5-Gallon)	\$5	\$7.50	\$15	\$20
Water Jug (10-Gallon)	\$6	\$9	\$18	\$24

GRILLS

Item	Daily	Weekend	Holiday	Weekly
Large Towable Propane Grill/Smoker	\$55	\$110	\$165	\$220
Weber Grill	\$12	\$24	\$36	\$48

TRAILERS

Item	Daily	Weekend	Holiday	Weekly
Ball Mount	\$7.50	\$15	\$22.50	\$40
Car Hauler	\$70	\$140	\$210	\$280
Dump Trailer	\$100	\$200	\$300	\$400
Enclosed 4x6	\$30	\$60	\$90	\$120
Enclosed 5x8	\$35	\$70	\$105	\$140
Enclosed 6x10/6x12	\$40	\$80	\$120	\$160
Flatbed 6x12 Trailer	\$40	\$80	\$120	\$160
Flatbed 16' Dual Axle	\$50	\$100	\$150	\$200
Hi Side 5x10 or 5x12	\$40	\$80	\$120	\$160
Hi Side 6x12 or 7x12	\$45	\$90	\$135	\$180
Lights Adapter	\$5	\$5	\$5	\$5
Tow Dolly	\$50	\$100	\$150	\$200

TRAVEL TRAILERS

Item	Daily	Weekend	Holiday	Weekly
19' Sleeps 4 (Jayco/JayFlight)	\$135	\$337.50	\$405	\$540
20' Sleeps 4 (Jayco/Swift)	\$160	\$400	\$480	\$640
26' Sleeps 7/8 (Jayco/Swift)	\$185	\$462.50	\$555	\$740
Pop Up Trailer	\$75	\$187.50	\$225	\$300
Generator w/Travel Trailer	\$30	\$75	\$90	\$120

Reservations require RV Safety Course completion.
9 a.m. and 2 p.m. A \$2 fee is charged.

SAFETY TRAINING REQUIREMENTS

Boater's Safety Course

Outdoor Recreation requires a Boaters Safety Course certificate from Texas Parks and Wildlife in order for customers to rent our powered boats.

• BoatUS.org • boaterexam.com • Boat-ed.com • BOATsmartexam.com • iLearnToBoat.com

Kayak and Canoe safety course is required for non-powered boating equipment.

Go to: www.boaterexam.com/paddling

If taking an online safety training course, Patron must bring proof of completion before renting.

Travel Trailers

All customers renting a travel trailer are required to watch a safety video prior to checking out equipment.

BOATS

Item	Daily	Weekend	Holiday	Weekly
John Boat 19'	\$130	\$260	\$390	\$520
Pontoon Boat	\$210	\$420	\$630	\$840
SUP-YAK Inflatable Kayak/Paddle Board (pricing below)				
	\$25	\$50	\$75	\$100
Electric Pump	\$5 flat fee			
Ski Boat	\$200	\$400	\$600	\$800

*All boats are Fresh Water Only

Reservations require Boater or Canoe/Kayak Safety Course completion. The kayak/canoe course is offered between 9 a.m. and 2 p.m. A \$2 fee is charged.

WATER ACCESSORIES

Item	Daily	Weekend	Holiday	Weekly
Life Vest Without Boat	\$3	\$6	\$9	\$12

JBSA RV STORAGE

Item	Monthly
All RV Storage Spaces (Randolph)	\$60

There may be a waitlist to receive a spot in the RV storage lot.

RANDOLPH RESALE LOT (25 ft or less)

Show vehicle for 15 days with 15-day extensions if needed. No vehicle can remain on lot for more than 75 days per year. Must be active-duty, reservist, DOD, retired military or retired DOD civilian to use lot.

	15 days	16-30	31-45	48-60	61-75
Active-duty on PCS/TDY orders	\$15	\$15	\$15	\$15	\$15
Prices	\$15	\$25	\$50	\$90	\$180

Must show DOD ID, vehicle registration and proof of insurance. JBSA requires all documents.



Texas Parks and Wildlife Hunting and Fishing License Available at Randolph Outdoor Recreation

- TX Resident Active-Duty Military Super Combo Package (No Charge)
- Disabled Veteran Super Combo Package (No Charge) (Disability Rating of 50% or More, Must Provide Proof)
- License year begins August 31 and are available for purchase August 15

Download TWP Outdoor Manual Hunting, Fishing & Boating Regulations at OutdoorAnnual.com.

PARTY ITEMS

Item	Daily	Weekend	Holiday	Weekly
Bounce House	\$100	\$150	\$200	\$300
Canopy 10x10 Easy-Up	\$35	\$52.50	\$70	\$105
Canopy 10x20 Easy-Up	\$45	\$67.50	\$90	\$135
Card Table with Chairs	\$7	\$10.50	\$14	\$21
Chair, Folding Blue	\$1	\$1.50	\$2	\$3
Chair, Folding White/Padded	\$2	\$3	\$4	\$6
Chocolate Fountain	\$6	\$9	\$12	\$18
Cotton Candy Machine	\$40	\$60	\$80	\$120
Dunk Tank	\$90	\$135	\$180	\$270
Food Warmer (Chaffing Dish)	\$6	\$9	\$12	\$18
Margarita Machine	\$65	\$97.50	\$130	\$195
Patio Heater	\$35	\$52.50	\$70	\$105
Popcorn Machine	\$40	\$60	\$80	\$120
Santa Suit	\$45	\$67.50	\$90	\$135
Snow Cone Machine	\$50	\$75	\$100	\$150
Standing Fan	\$25	\$37.50	\$50	\$75
Table 6' Aluminum	\$6	\$9	\$12	\$18
Table Round 5'	\$7	\$10.50	\$14	\$21
Table Round 4'	\$5	\$7.50	\$10	\$15
Trash Cans	\$6	\$9	\$15	\$18
Turkey Fryer	\$20	\$30	\$40	\$60